



CANADIAN
PARTNERSHIP
AGAINST CANCER

Models of Care Initiative

CORINNE DALY & RAQUEL SHAW MOXAM

MAY 2, 2022

Objectives



To officially launch the Models of Care pan-Canadian funding opportunity



To provide an overview of tools that will support jurisdictions in planning their proposed models of care



To outline the approach to prepare partners for proposal co-development



To discuss and obtain feedback on engaging jurisdictions with the planning survey

Context

- Increasing pressure on cancer care provider capacity in Canada
 - Rising burden of cancer
 - Increasing expectations for person-centred care closer to home
 - Inequities in access to quality care and health outcomes
- Burnout among cancer care providers and human health resources creates an opportunity to develop innovative ways to optimize resources more equitably and efficiently
- Health system pressures exacerbated by the COVID-19 pandemic
 - Opportunity for the cancer system to optimize resources and care delivery
- Models of Care is a strategic approach to support the priorities in the 2022-2027 business plan and in advancing priorities 2, 3, 5 and 7 of the Canadian Strategy for Cancer Control
- A priority initiative identified by Partnership Council

Embedding Health Equity into Models of Care

Priority will be given to projects that aim to:

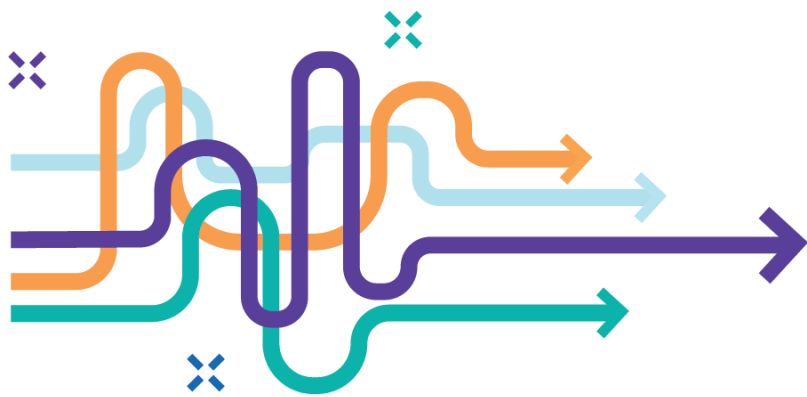
- **Focus on health equity:**

- Address the needs of people who are systemically excluded from the health system, which may include efforts to reinforce a commitment to reconciliation with First Nation, Inuit and Métis

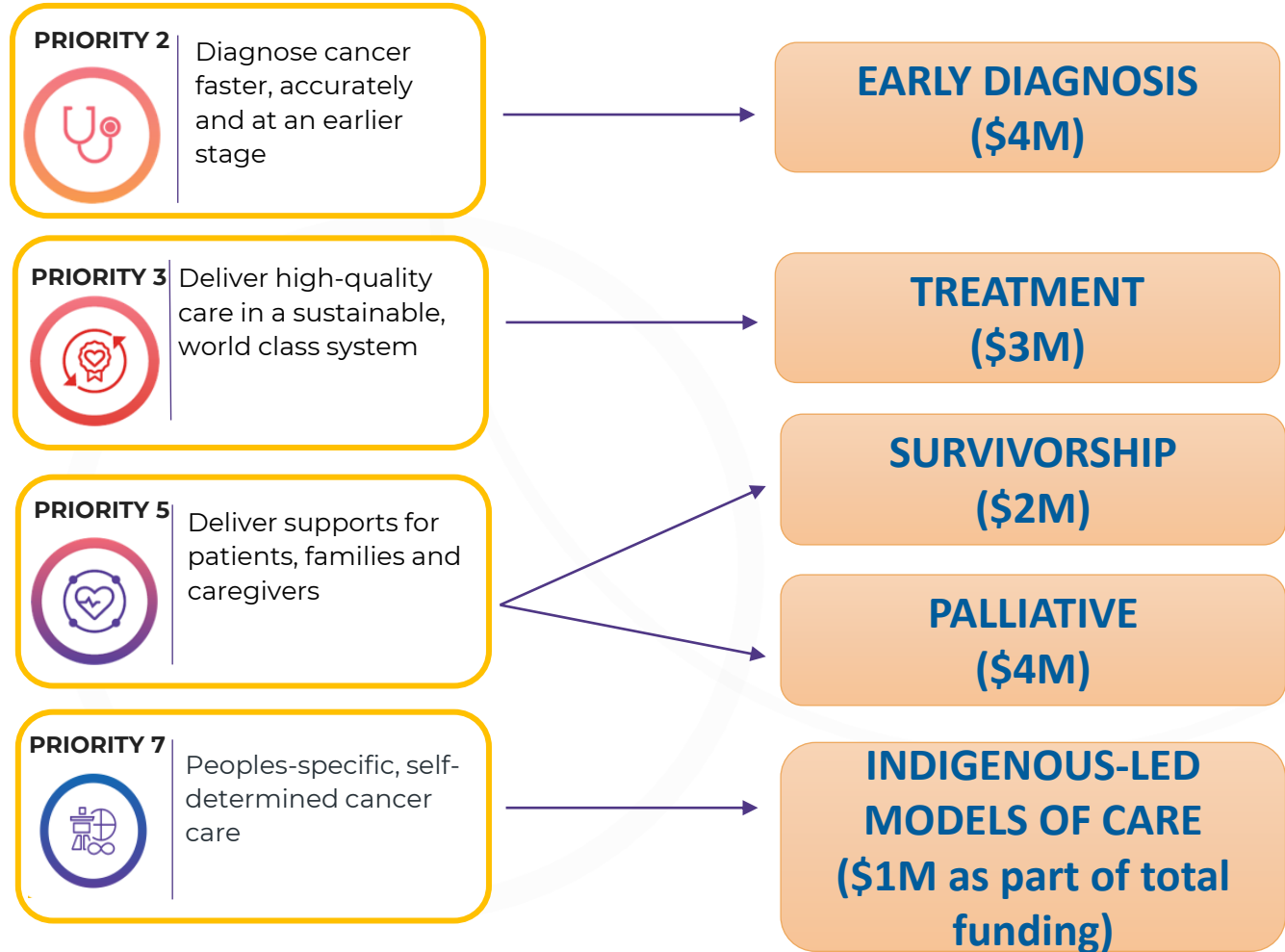
- **Collaborate with community partners:**

- Co-develop solutions that strengthen health equity based on shared priorities, leveraging community strengths and knowledge by partnering with First Nations, Inuit and Métis on self-determined priorities and/or working with others experiencing inequitable access to health care

Implementation Funding Overview



**MODELS OF CARE
\$13 MILLION**



Identifying jurisdictional priorities: Planning survey

The planning survey will be "light and lean", with questions focused on:

- Description of the project/model of care
- Identifying area(s) of focus
- Outline the equity focus
- Extent of partner involvement to advance equity
- Timing
- Estimated budget and supports needed for planning and proposal development

- Electronic survey disseminated through Partnership Council in May 2022 (p/t co-leads and key implementers cc'd)
- Jurisdictions will be encouraged to fill out the survey in collaboration with community partners
- Jurisdictions can submit up to 3 proposed models of care for consideration
- Financial support is available during planning phase (up to \$25,000 per jurisdiction)

Survey Assessment Approach

- Surveys will be assessed by a review committee to ensure:
 - ✓ Promising projects address inequities in access to high quality and efficient cancer care
 - ✓ At least one project per jurisdiction is funded
 - ✓ Support diverse projects that aim to make improvements across geography, cancer type, cancer stage and disparity
- Assessment results will serve as a starting point to inform jurisdictional consultations

Meeting partners where they are at: an example

- An opportunity to move jurisdictional project planning efforts forward when ready e.g., Nova Scotia's proposed model of care
 - The Partnership is working with NS on their timelines to provide planning funds when they are ready, this will not impact this opportunity for other jurisdictions
 - Planning funds to support engaging communities in planning the scope of their models of care project (in-line with intention of planning funds)
 - In turn, early adopters will provide insight into the use and benefit of planning funds and will contribute to the overall project process improvement/refinement

Proposed Role of Partnership Council & Regional Leads

Role of Partnership Council:

- As stewards of this funding opportunity, be aware of potential projects and engage partners in the planning of these projects
- To share the planning survey with co-development partners

Role of Regional Leads:

- Support the development of the survey distribution list
- Serve as liaison to support survey dissemination and jurisdiction consultations (e.g., helping connect jurisdictions to planning supports as required)
- Consult on mapping jurisdictions priorities based on survey responses

Support & Collaboration: 6-month roadmap



*Webinars will be recorded

Discussion

1. Do you have any questions about the planning process and how you will be engaged?
2. Do you see any risks with the proposed timeline?



CANADIAN
PARTNERSHIP
AGAINST CANCER

Appendix

Models of Care Anchored in Canada's 2022-2027 Cancer Strategy



PRIORITY OUTCOMES

PRIORITY 1 Decrease the risk of people getting cancer



PRIORITY 4 Eliminate barriers to people getting the care they need



PRIORITY 6 Culturally appropriate care closer to home



PRIORITY 2 Diagnose cancer faster, accurately and at an earlier stage



PRIORITY 5 Deliver information and supports for people living with cancer, families and caregivers



PRIORITY 7 Peoples-specific, self-determined cancer care



PRIORITY 3 Deliver high-quality care in a sustainable, world-class system



PRIORITY 8 First Nations-, Inuit- or Métis-governed research and data systems

